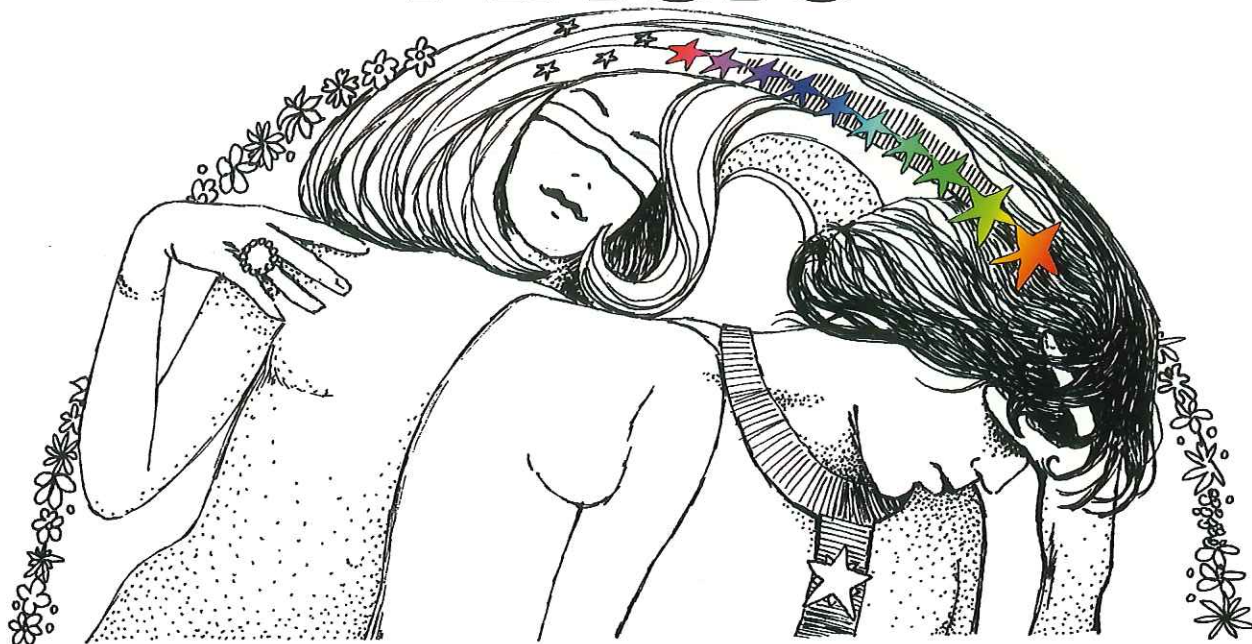
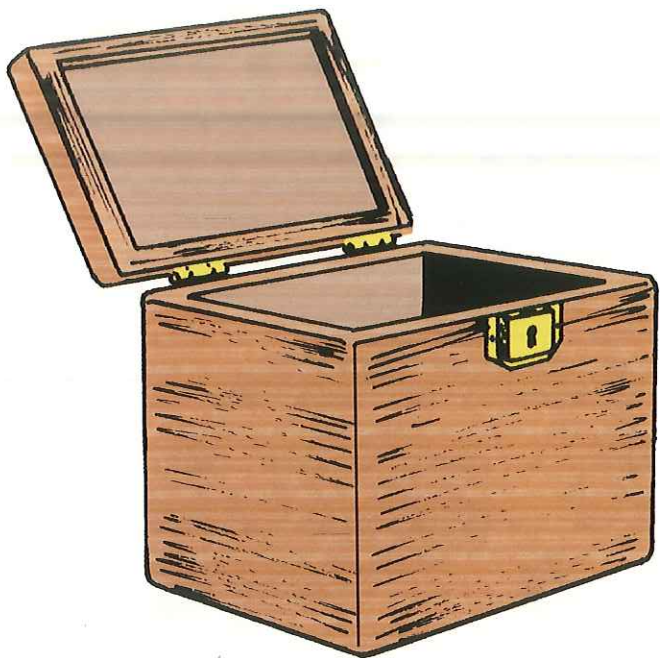


# SPIRIT & MENTAL MAGIC



## 3102 DR. Q PREDICTION CHEST

The trick that makes headlines. Never has any piece of magic apparatus been built that produces such a profound impression upon an audience. A prediction is made anytime in advance. The box is locked and sealed. It is placed in the possession of any one to keep until the day it is opened. The party having the chest unlocks it, and there is the correct prediction: a headline, news item, results of outstanding sporting events, or whatever the performer decides upon. Once you possess this apparatus you'll never part with it at any price.



**3105  
THE CHEST OF SIBYL**

You predict in writing a future event and have a spectator lock the prediction in a chest. Upon opening, after the event has occurred, your prediction proves correct. This item is so beautifully made, so smooth in working that it is superb. Finished in natural woods only, this does not look like a traditional magic box. Polished brass hinges and lock make it look like a jeweler's box. In fact, it can be used as a watch box with built in rattle. A real collector's item.



**3121  
FULL LIGHT SPIRIT SEANCE**

A number of examined articles are placed upon a table and the performer holds a spread-out cloth in front of them. The performers' two hands are visible at all times and yet strange happenings occur. A bell from the table rings, a tambourine plays, flowers materialize over the top of the cloth. Objects jump in the air while the performer is obviously doing nothing but holding the cloth. Done in full light.

**116 SPIRIT & MENTAL MAGIC**



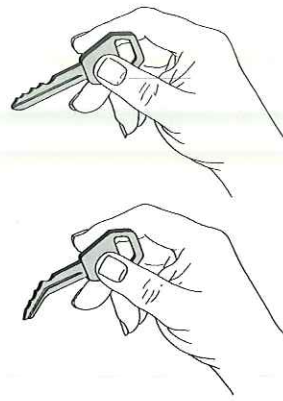
**3119  
BEWITCHED**

The dancing cane effect in a natural mode for special events such as ghost shows, Halloween or witching parties. The realistic witches broom floats, spins, dances and performs other weird acrobatics limited only by the imagination of the performer.



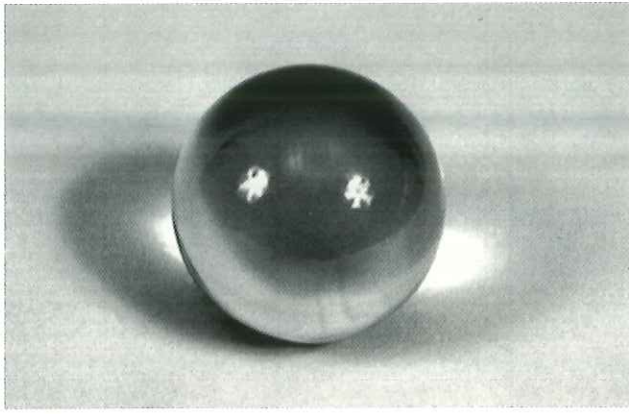
**3134**  
**ULTIMATE KEY BENDING**

The miracle worker causes a borrowed key to mysteriously bend in full sight of the audience. An unbelievably simple Owen Magic gimmick takes this effect from the "just another trick" state to the ultimate miracle. The clean handling in this routine allows the performer to present a convincing demonstration of psychic powers.



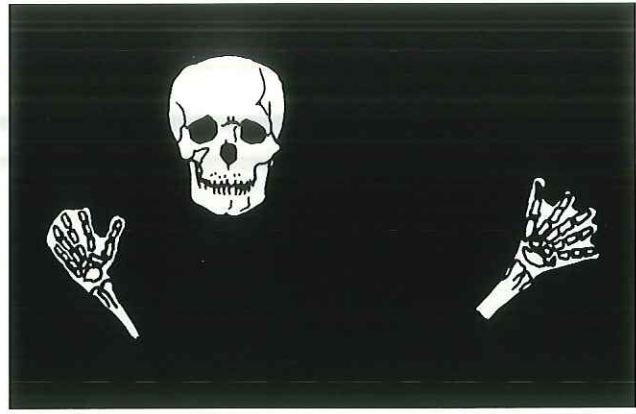
**3103**  
**DIVINATION**

A solid plated bar is dropped into one of three numbered openings in a neat and beautiful wood case. Without having seen this done the performer can tell which number contains the bar without touching the case or opening the lid.



**1704**  
**CRYSTAL GAZING BALLS**

Owen Magic has in stock crystal balls with the price depending on size and quality. Inasmuch as all our gazing globes are imported our stock undergoes considerable variation. We suggest inquiry at time of order.



**3120**  
**VISIONS OF THE DARK**

The performer causes a number of objects to materialize and float about a darkened room in an uncanny manner, at times far over the heads of the audience and at other times near the floor. All objects and equipment supplied are first grade and made to last indefinitely.



**3108**  
**SUPER MENTAL SLATE**

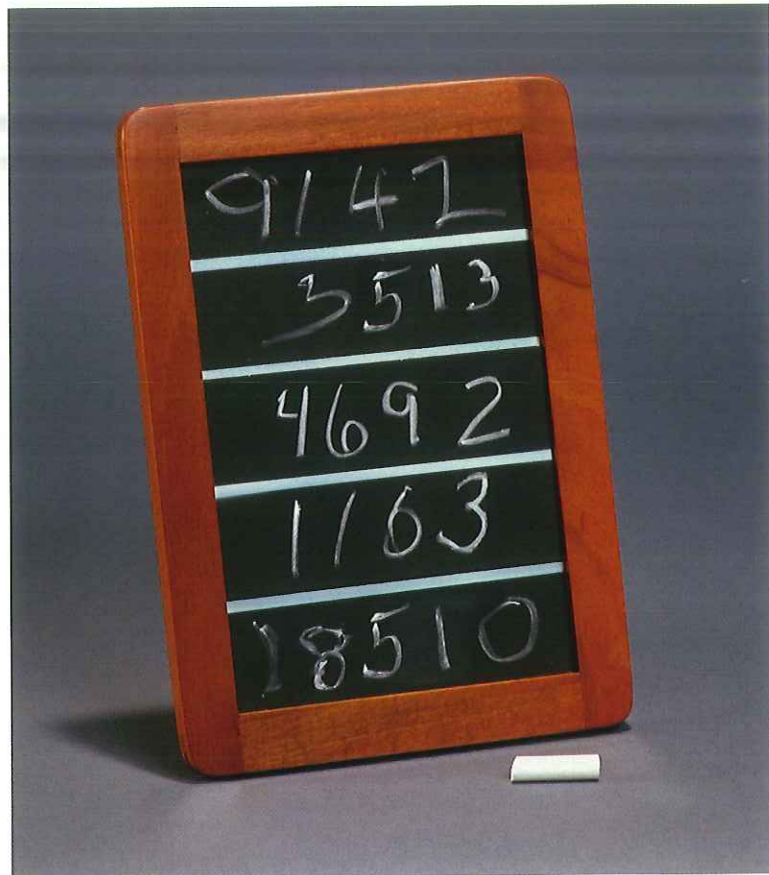
The same ultimate effect as the mental epic but enhanced by a further development of this fine effect inasmuch as the performance is practically done by the equipment itself. Made in two sizes with the unparalleled quality of Owen.

**118**      **SPIRIT & MENTAL MAGIC**



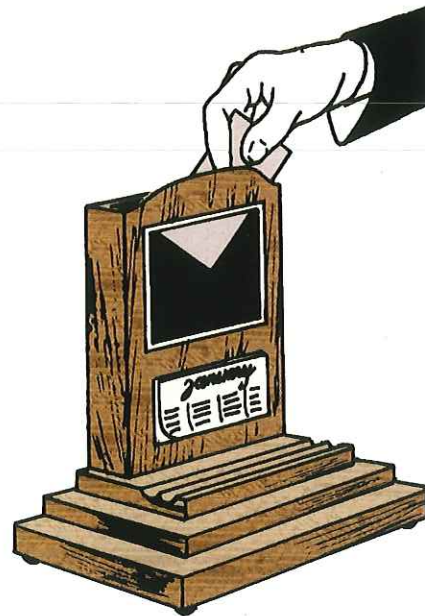
### 3110 MIRACLE SLATE

The performer writes a prediction on a blackboard and keeps it concealed from the audience. Next he has four different spectators each write a four digit number in the spaces each provided on a slate. A fifth spectator is requested to add the figures and write the answer in the remaining space. Can it be coincidence when his prediction figure matches that on the slate?



### 3111 THE SPIRIT CABINET

A small cabinet is placed across the backs of two chairs or on a small table. Bells, tambourines, etc. placed in the cabinet begin to ring and play and finally jump out on the floor. A borrowed handkerchief, when dropped in the cabinet, peeps out in a ghostly fashion and jumps out on the floor and dances to the music. At the finish the handkerchief is handed back to the spectator. This beautiful cabinet folds flat for packing.



### 3112 DEVILS' MAILBOX

An innocent appearing and useful desk accessory is also a marvelous piece of magical equipment to exchange an envelope apparently in full view at all times. By merely placing the envelope in the open rack above the desk calendar the change is made. So undetectable that no suspicion is aroused as to what has happened. The rack is natural finished fine wood, grooved at the base for pen or pencil and furnished with a calendar.



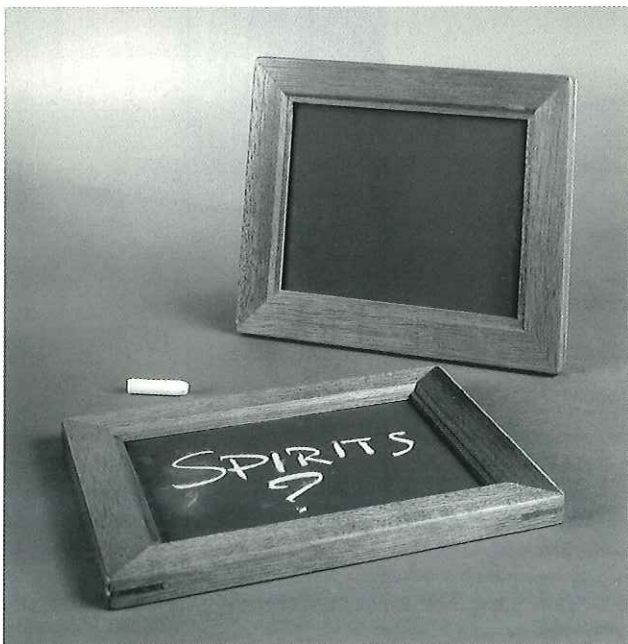
**3132  
FLOATING TABLE**

The performer places his finger tips on the surface of an elegant table and, as if magnetized to his fingers, it clings and rises as he lifts his hands. It follows his every motion. This table floating is so convincing it is being used by some of the world's greatest so called genuine mystics.



**3117  
THE HAUNTED CANDLE**

A large lighted candle rises out of an elegant turned-wood candlestick, turns a complete revolution in the air and settles back into the candlestick. A startling and pretty interlude for any magical performance.



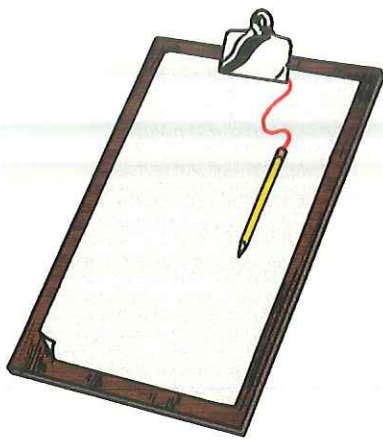
**3107  
OWEN DR. Q SLATES**

These slates were originally designed by Carl Owen and are positively the most ingenious slates for producing two sets of writing ever designed. The slates may be freely handled by anyone and, with nothing added or taken away, will apparently produce writing on both blank slates when they are held together by a member of the audience. This is without a doubt the nearest approach to genuine spirit writing ever accomplished.

3107A: Standard

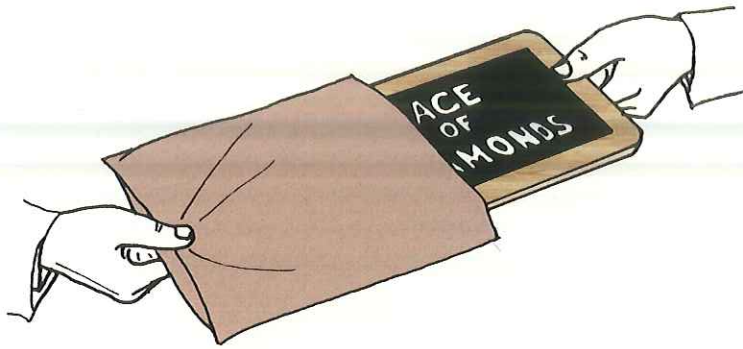
3107B: Oversize





### 3116 CLIP BOARD

A perfect method to obtain information from the audience. The Owen Clip Board will stand examination at any time and seems like the simple clip board used commercially. Nothing to hide or conceal, the board may be used over and over without reloading.



### 3115 SLATE OF FATE

A miniature slate is exhibited on both sides. Three cards are chosen from a freely shuffled deck. The slate is passed over the deck. When the first of the three cards is found written in chalk on one side of the slate, the slate may again be inspected by the audience and it is placed in a small sack. Upon removal the names of the remaining two cards are found on respective sides of the slate. Three messages on one slate, yes, with this Owen masterpiece of woodworking.



### 3118 ULTISSIMO

An amazing prediction. The performer writes on two blank cards the names of any two cards that the audience will later call out. As each card is named it is taken from a deck and placed face forward in the stainless steel rack beside the predictions which are back forward. When the rack is revolved the names of the identical cards called are shown to be the prediction the performer previously wrote and placed in the rack. Owen has never granted manufacturing rights for this effect to others.



### 3101 DR. Q SPIRIT HAND

A hand carved of wood by the Owen Master craftsmen is placed upon a board where it will answer any questions by rapping on the board. Both board and hand may be examined at any time and not a trace of the operating secrets of this marvelous original rapping hand can be found. We furnish the carved hand trimmed with velvet and lace, and the board in a natural wood grain finish. Beautiful beyond description.



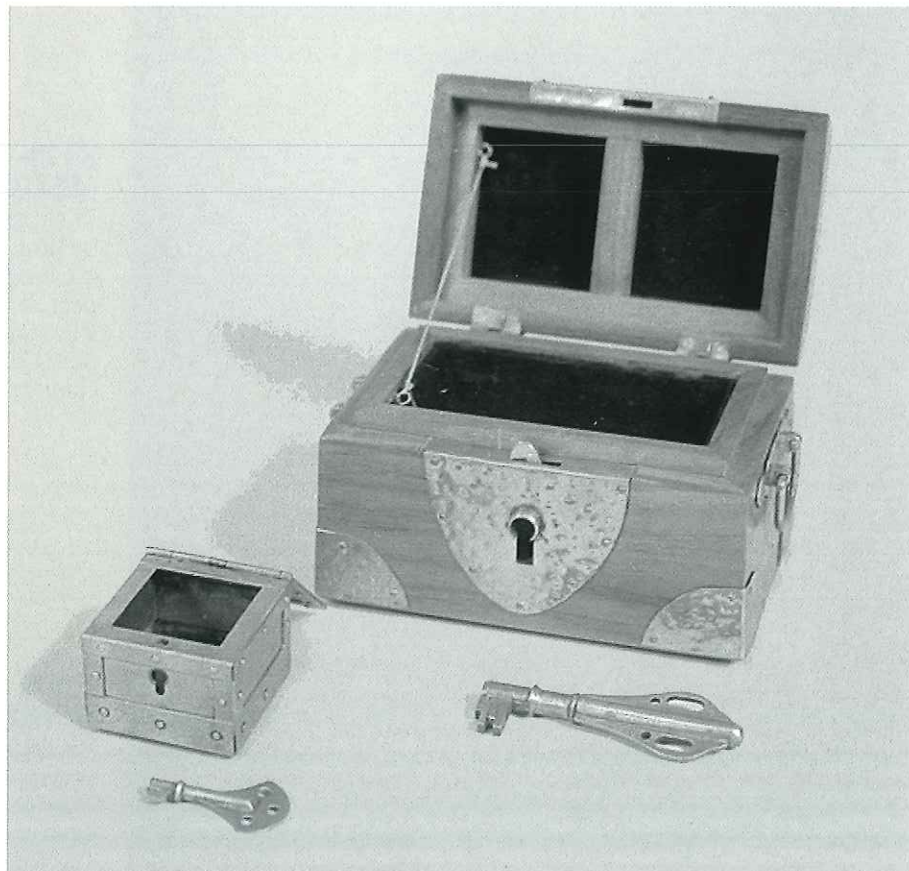
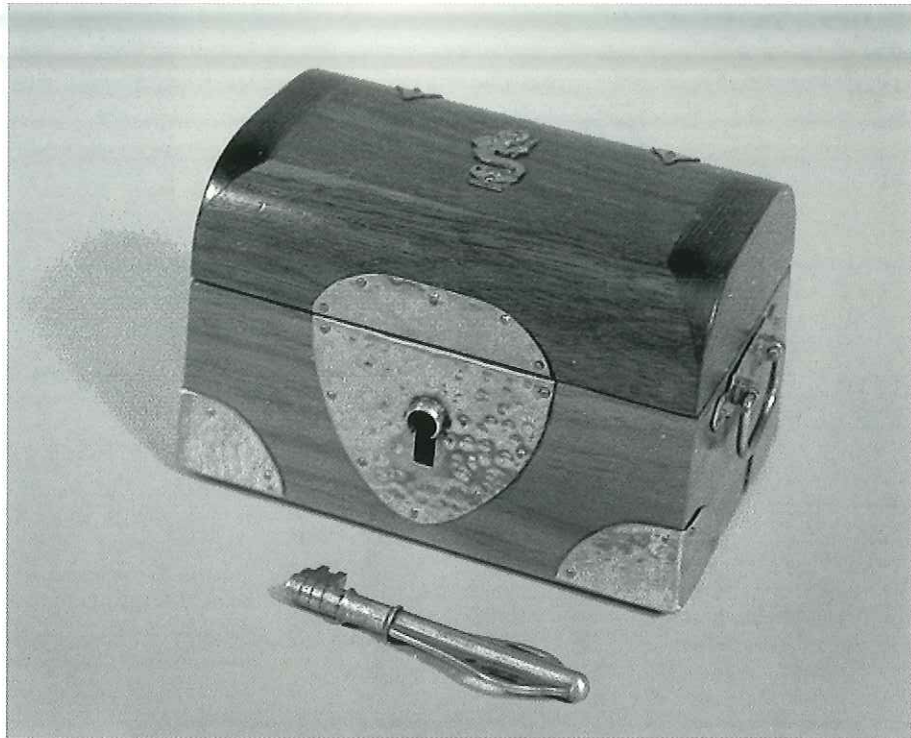
**3136**  
**THE PALLADIAN LOCK**

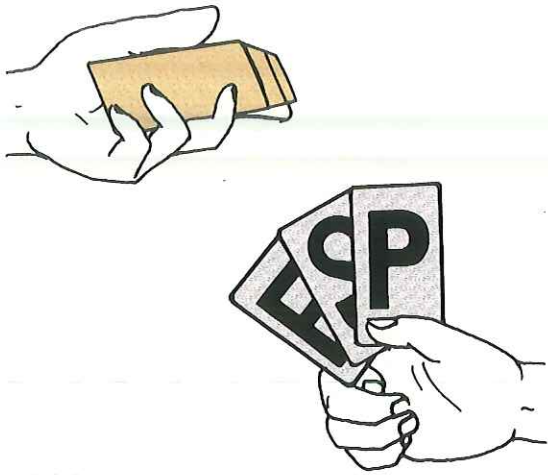
A Masterpiece of the Magical Arts, shown here in the engraved Gold Edition supremely crafted by Les Smith. A spectator locks the lock and holds it high. Across the stage you point the key at the lock, then turn it. The lock falls open in the spectator's hands. Depicted on the back are the men whose creative work brought this ultimate lock effect into existence. Each Gold Edition lock is engraved to the order of the purchaser.



**3100  
OWEN  
ANNIVERSARY  
PREDICTION CHEST**

A handsome copper bound natural wood chest furnished with a brass key is entrusted to a committee for safe keeping for a considerable time before being opened by the committee. Inside the chest is found a small brass strong box with another key. The strong box is opened and therein is found a prediction of a current event. Somewhat smaller than the original Owen prediction chest but using the same principle and even more mysterious and efficient. This, when properly presented, creates a sensation and leads to more bookings! Includes a new routine for impromptu performances. The Chest is beautifully made with natural wood grain antiqued and bound in genuine hammered copper. The "Prediction Chest" was first designed, invented and built by Carl Owen. All others are but plagiarized attempts.





**3114  
ESPECIALLY MENTAL**

In effect, you predict the order in which the subject will insert cards into three envelopes. It is that simple and that direct. There are no sleights or moves or switching. Everything used may be examined both before and after. There are no faked cards or envelopes used. You will learn it and be able to do it correctly immediately after reading the detailed instructions. An absolutely astounding mental feat.



**3106  
X-RAY VISION CHEST**

An impossibility that you can do with this small chest of fine wood. A spectator gathers several small objects of the audience's choice, places them in the box and binds on the lid. Placed in the performer's hands behind his back, but in full view of the audience, the performer immediately describes the contents of the box. Oh so subtle and so beautifully made as is all Owen equipment.



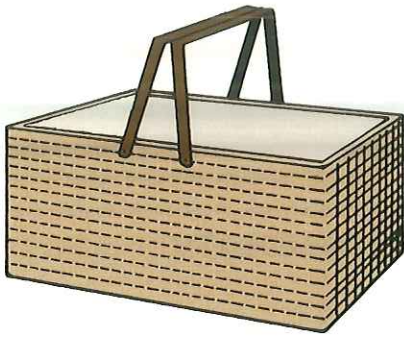
**3126  
MEDIUM'S REACHING ROD**

This accessory has been jealously guarded by professional mediums for years. It is for use in dark room seances, when bells, trumpets, etc. are made to ring and float in space although the operator may remain securely tied. Can be carried in the vest pocket and extends from 8 to 36 inches.

**3104  
SPIRIT PAINTINGS**

Several blank canvasses are inspected and marked by the audience. When these canvasses are placed in a frame which is lighted from the rear beautiful pictures gradually develop in full color. Positively one of the most beautiful and eerie effects of spirit magic. As with all Owen equipment this outfit is of the finest available.





### 3122 CHANGE BASKET

Any number of slips of paper, questions or requests for readings are collected in a basket. Without ever touching the slips, spectators are requested to remove these for readings and the performer gains full knowledge of what has been written on the slips of paper. An indispensable accessory for mentalists.

### 3130 THUMB WRITER

Made right, fits neatly on the thumb and due to an extension arm the lead is in just the right place for writing.



### 3123 AIR TIGHT PREDICTION

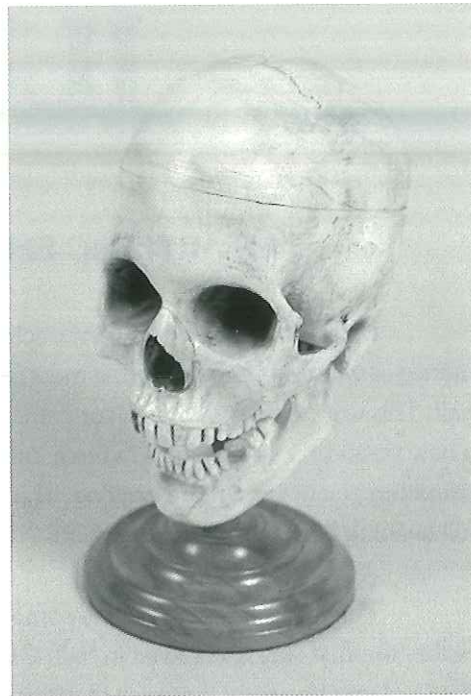
A prediction is placed in a toy balloon which is inflated and sealed. The balloon is signed by the committee with a ball point pen and left in the care of the committee. On a given date balloon is broken and the prediction is found to be correct. One message, one balloon, no switch, no stooges.

### 3128 THE FARO BOX HAND READER

This little machine comprises a most practical secret apparatus always ready for immediate use. Mechanically made in the most expert manner possible it is guaranteed first class and reliable. Operates with small cards (size 7/8 x 1-1/4 inch), a supply of which are with each instrument.

### 3129 THE ROLLER BOX HAND READER

This little article incorporates features which are quite in line with our Faro Box Reader except that instead of small cards a paper strip is used which operates camera fashion on two small rollers with thumb cogs. Expert construction.



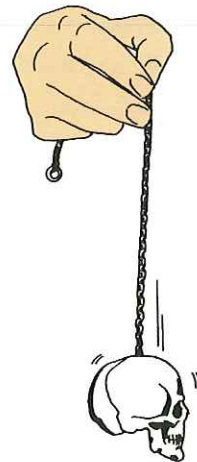
### 3125 OWEN TALKING SKULL

Owen Magic first produced this realistic radio controlled talking skull in 1963. The skull is so real that it really seems to talk in answer to questions. The finest mechanism of this type ever offered. The ultimate in mystery. One version includes a moving jaw as it speaks, or the jaw can be made to clack.



### 3138 THAYER-OWEN PEDESTAL READER

A neat and attractively finished black and gold pedestal for holding a ball, silver or crystal, offering a simplified method to read questions or answers. Merely a slight twist brings your information into view.



### 3131 THE AMULET OF ANUBIS

A miniature gilded skull suspended from a chain is possessed of mysterious powers, according to your patter, since it is fashioned of the lead from the outer sarcophagus of an ancient Egyptian priest. It divines lost articles, answers "yes" or "no" questions and locates cards. A unique form of the time honored "sex detector" presented in an intriguing manner.